

## *About Us.*

Towards Healing is a Counselling and Support Service for Survivors of Institutional, Clerical and Religious abuse, funded by the Catholic Church.

It replaces the Faoiseamh Counselling Service, which has been in operation since 1997, and which has provided face-to-face counselling to over 5,000 persons during that time, as well as Helpline support to over 15,000 survivors of Institutional, Clerical and Religious abuse.

The services provided by Towards Healing are developed in consultation with representatives of Survivors, and will include Restorative Justice Meetings, Groupwork, Counselling Services, Helpline Services, Support Group Services, Practical Workshops and a bridging service designed to link clients to services relevant to their needs.



**TOWARDS HEALING**

A Catholic Church response to Institutional/Clerical/Religious abuse

P.O. Box 5654, Dublin 14

**Freephone (Ireland):**

1800 303416

**Freephone (UK):**

0800 0963315

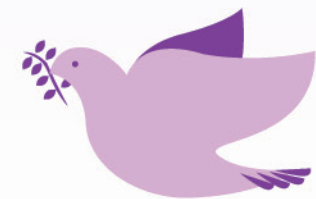
**Free  
and Confidential  
Helpline  
and Counselling  
Referral Service**

**FREephone**

**(IRE) 1800 303416**

**(UK) 0800 0963315**

**[www.towardshealing.ie](http://www.towardshealing.ie)**



**TOWARDS HEALING**

A Catholic Church response to Institutional/Clerical/Religious abuse

## Questions

### WHAT SERVICES ARE AVAILABLE THROUGH TOWARDS HEALING?

- Counselling Helpline
- Up to 80 Sessions of once weekly individual face to face counselling for survivors, their partners, parents and children.
- 12 Sessions of couple/family therapy counselling (where the need arises)
- 6 Sessions of face-to-face counselling for siblings of survivors.
- Practical Workshops
- Support Groups
- Restorative Justice Initiatives.

### WHO IS ELIGIBLE TO RECEIVE SERVICES THROUGH TOWARDS HEALING?

Towards Healing provides counselling and support for people who, as minors, suffered physical, sexual and/or emotional abuse by members of, or while in the care of the Catholic Church in Ireland. We can provide services to clients regardless of where they currently live.

### HOW DO I CONTACT TOWARDS HEALING?

You can call us on  
1800-303416 (Rep. of Ireland),  
0800-0963315 (N.I. and U.K.)

You can email us at  
**[casemanager@towardshealing.ie](mailto:casemanager@towardshealing.ie)**

You can visit us online at  
**[www.towardshealing.ie](http://www.towardshealing.ie)**

The Helpline operates on  
Mondays and Wednesdays  
from 11.00 am – 8.00 pm,  
and on Fridays from 11.00 am –  
4.00 pm

### WHAT ABOUT MY FAMILY?

Towards Healing can provide and pay for counselling for spouses/partners, parents and children of survivors of Institutional/Clerical/Religious abuse.

### WHAT ABOUT MY BROTHERS AND SISTERS?

Towards Healing can fund six sessions of counselling to help siblings cope with the fact that their brother or sister suffered in this way.

### IS EVERYTHING I TALK ABOUT IN COUNSELLING CONFIDENTIAL?

**Yes** it is. **HOWEVER**, if the Counsellor believes that you or someone else is in serious danger they must share this information to ensure safety.

### WHAT ABOUT CHILD PROTECTION?

Towards Healing is totally committed to Child Protection. You are welcome to discuss any concerns with our Child Protection Administrator, Ms. Maggie O'Neill at 085 8801643.

### ANY OTHER QUESTIONS?

Call us – no question is too big or too small.

### HELPLINE HOURS

FREEPHONE (IRE) 1800 303416  
FREEPHONE (UK) 0800 0963315  
MONDAYS 11.00am – 8.00pm  
WEDNESDAYS 11.00am – 8.00pm  
FRIDAYS 11.00am – 4.00pm